

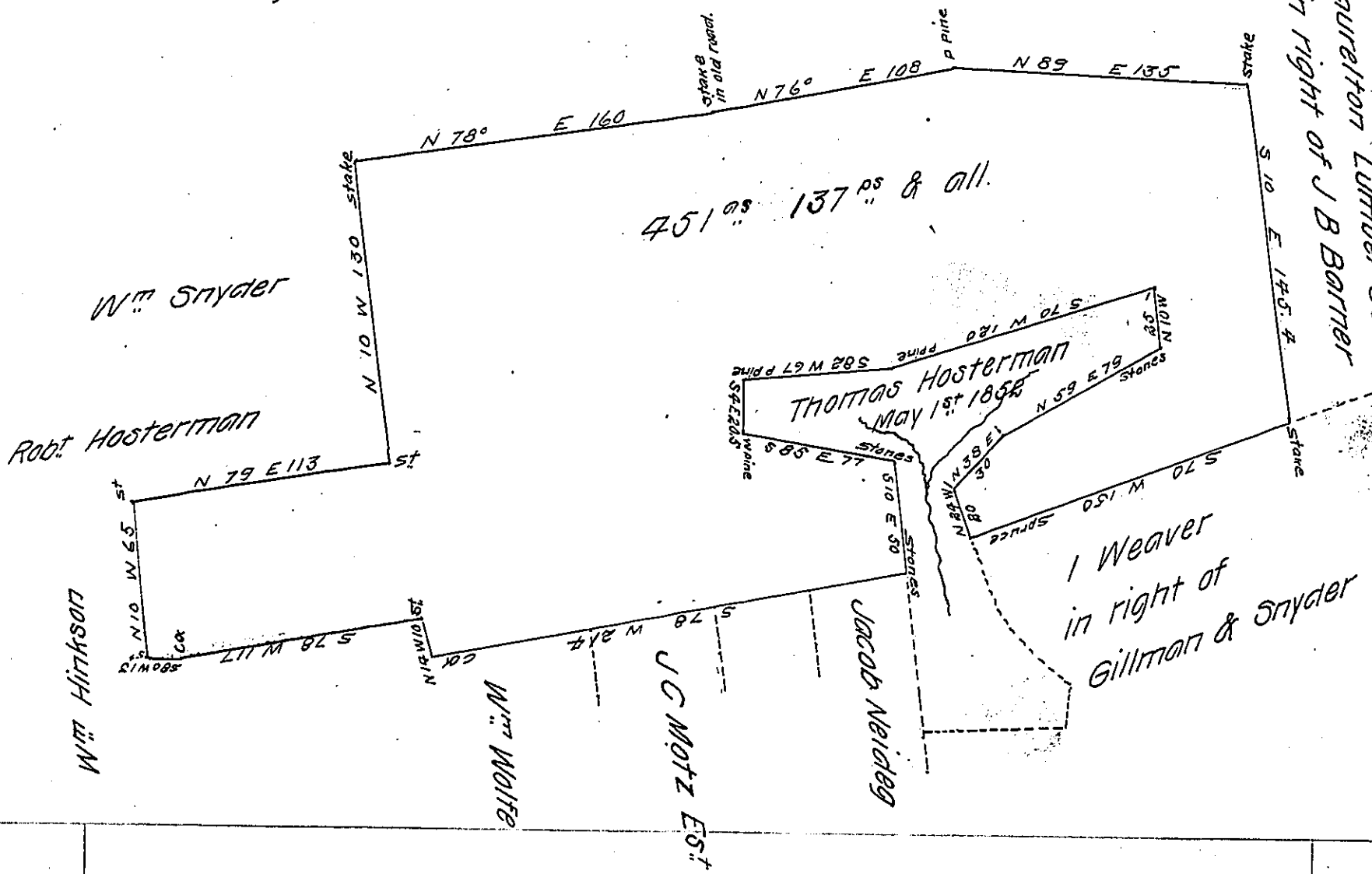
N

Scale 1 inch = 80 rds.

Streets & Minnich  
in right of Gratz

Laurelton Lumber Co  
in right of W E Smith

Laurelton Lumber Co  
in right of J B Barter



A draft of a tract of land situated in the Township of  
 Haines and County of Centre containing four hundred fifty one acres  
 137 perches and allowance of six per cent for roads etc. Surveyed  
 the 17<sup>th</sup> day of April 1902 in pursuance of a warrant granted to A M  
 Harter dated the 20<sup>th</sup> day of March 1902

To James W Latta Esq  
 Secretary of Internal Affairs

H B Hering  
 County Surveyor

IN TESTIMONY that the above is a copy of the original remaining on file in  
 the Department of Internal Affairs of Pennsylvania, made  
 conformably to an Act of Assembly approved the 16th day of  
 February, 1833, I have hereunto set my Hand and caused  
 the Seal of said Department to be affixed at Harrisburg,  
 this first day of June 1905

*James W Latta*  
 Secretary of Internal Affairs.